

## INSTRUCTIONS FOR AUTHORS OF PAPERS USING MICROSOFT WORD

Navonil Mustafee

The Business School  
University of Exeter  
Streatham Court, Rennes Drive  
Exeter EX4 4ST, UK

Ki-Hwan G. Bae

Department of Industrial Engineering  
University of Louisville  
J.B. Speed Building  
Louisville, KY 40292, USA

Sanja Lazarova-Molnar

Mærsk Mc-Kinney Møller Institute  
University of Southern Denmark  
Campusvej 55  
Odense, 5230, DENMARK

Markus Rabe

Department IT in Production and Logistics  
TU Dortmund University  
Leonhard-Euler-Str. 5  
Dortmund, 44227, GERMANY

Claudia Szabo

School of Computer Science  
The University of Adelaide  
North Terrace  
Adelaide, 5000, AUSTRALIA

## ABSTRACT

This set of instructions for producing a proceedings paper for the 2019 Winter Simulation Conference (WSC) with Microsoft Word also serves as a sample file that you can edit to produce your submission, and a checklist to ensure that your submission meets the WSC 2019 requirements. Please follow the guidelines herein when preparing your paper. Failure to do so may result in a paper being rejected, returned for appropriate revision, or edited without your knowledge.

## 1 INTRODUCTION

This paper provides instructions for the preparation of papers for the 2019 Winter Simulation Conference (WSC) with Microsoft Word. There is a companion paper that provides instructions for the preparation of papers using LaTeX. **The easiest way to write a paper using Microsoft Word that complies with the requirements is to use the `wsc19word.dotx` template file.** Do not use an older version, as *some specifications have changed*.

An author kit is available via the [conference website](#). The author kit includes this Microsoft Word document and its LaTeX companion. It also includes guidelines that you may find helpful for writing a conference paper and for giving a presentation.

When preparing your paper in Word, you are required to use the Word template. The easiest way to use this template is to copy the template to your working directory and double-click the template from your operating system. This will launch Word and will create a new document based on the template.

A set of styles are defined in the template so that authors can easily achieve the required format. You should look carefully at how the styles are applied in this document. One simple way to get started with styles is to start with the sample paper and replace the existing text. Do not try to make “manual” formatting changes to the text – let styles do the work. For example, instead of manually indenting paragraphs to conform to the WSC 2019 specifications, simply apply the corresponding predefined style from Table 1; the paper will then meet indenting requirements. To view the styles defined in the template, open the Styles Panel by clicking the bottom right corner arrow button in the “Styles” group on the “Home” ribbon in MS Word 2010 (please use MS Word help to identify corresponding capabilities in other versions). The Styles panel also shows the style currently applied to the text at the current cursor position as the boxed style in the list. To apply different formatting, choose the appropriate style from the list. The specific formatting instructions for a style may be viewed by placing the cursor over the style of interest. For additional help with styles, review the Word Help topic “Style basics in Word.” Avoid updating the styles that are provided; the proceedings editors have checked that the formatting provided by the styles is that needed for the WSC.

Note that some styles appearing in this paper’s styles set are not found in earlier WSC templates nor in Table 1 because formatting that is added during the normal editing process will appear in the Style Area Panel. The safest way to ensure conformance to formatting requirements is to apply only styles that are listed in Table 1.

## **2 GENERAL GUIDELINES**

### **2.1 Language**

The paper should be prepared using U. S. English in the interest of consistency across the proceedings. The language can be set in MS Word 2010 via File > Options > Language settings, and selecting “English (United States)” from the drop-down menu.

### **2.2 Paper Submission**

You will electronically submit the paper in Portable Document Format (.pdf), through the [conference website](#). The .pdf file allows for automatic counting of pages and ensures that the page limit has been followed. If the paper is accepted, you will electronically submit the word-processor source file (.docx) for the final version of your paper. The editors may send the file back to you with the request to make changes to conform to conference guidelines. For minor changes, the editors may make the changes themselves. Final .pdf files are generated by the conference proceedings editors.

You will also need to transfer the copyright of your article to the WSC using the copyright transfer form that will be available via the conference website at the appropriate time. *For your paper to be published by the WSC, you must complete the transfer of copyright.* When you have successfully transferred the copyright, you will receive a .pdf receipt.

If you are unable to satisfy these requirements, you should contact the proceedings editors.

### **2.3 Objectivity**

The content of the paper should be objective and without any appearance of commercialism. In general, comparisons of commercial software should be avoided unless they are central to the topic. If a comparison of commercial software is included, it should be based on objective analysis that includes criteria, description of ranking methodology on each criterion, and the rankings themselves to arrive at a conclusion. If an approach other than a detailed objective analysis is used to select the simulation software used for the study being reported, such as, availability of the software, or the familiarity of the analyst with the software, it should be clearly identified.

Table 1: Defined Word styles.

<b>Style Name</b>	<b>Description</b>
Abstract Heading	Heading style for abstract
Appendices	Appendix heading
AuthorAddress	(only for author address block)
AuthorBio	Author biographies
Definition	Definitions, Theorems, and Corollaries
Equation	Equations (without numbers)
EquationNumbered	Equations (with numbers)
Figure Content	Figures
Figure Label	Single-line figure caption
Figure Label Multiline	Multi-line figure caption
Heading	Unnumbered headings – e.g. References, Acknowledgments, Author Biographies, etc.
Heading <i>i</i>	Numbered headings for level <i>i</i> headings
Head ....	(Headings and running head styles not intended for author maintenance)
Hyperlink	Hyperlinks (character format, mark only the characters to form the hyperlink)
List Bulleted	Bulleted lists
List enum	Numbered lists
Normal	Normal text – no indent – used for first paragraphs after headings
Normal Indent	Normal text – indented – used for all paragraphs following the first for a section.
Program	“in-between” lines in a program listing
ProgramBoth	Single-line program statements
ProgramEnd	Last line in a program listing
ProgramStart	First line in a program listing
Reference	References
Table Label	Single-line table caption
Table Label Multiline	Multi-line table captions
Title	Paper title

## 2.4 Length Constraints

### 2.4.1 Length of the Abstract

The abstract should be at most 150 words. Since abstracts of all papers accepted for publication in the proceedings will also appear in the final program, the length limit of 150 words will be strictly enforced for each abstract. The abstract should consist of a single paragraph, and it should not contain references or mathematical symbols. Do not include a list of keywords. Keywords are not used in WSC proceedings.

### 2.4.2 Length of the Paper

The page size in the proceedings must be 8.5 inches by 11 inches (21.6 cm by 27.9 cm). The overall length of the paper should be at least five proceedings pages. **Papers should be at most twelve (12) pages**, except for introductory tutorials, advanced tutorials, and panel sessions, for which the limit is 15 pages. Exceeding the page limit will result in rejection for the proceedings.

## **2.5 Font Specification and Spacing**

The paper should be set in the Times New Roman font using an 11-point font size. The paper should have a 12.5pt line spacing. Do not use other fonts; use of other fonts means the proceedings editors will need to send the paper back to you to change the font.

## **2.6 Margins**

All margins are correctly defined in the provided template. Therefore, you should not need to care about margins at all, and you may skip this section. Should you have, by accident, destroyed the styles used there, please restore the following styles: In the heading of the first page the styles “HeadEditor1” and “HeadEditor2” for the first and second line, respectively, and on the other pages the style “HeadAuthor” (never more than one line here).

Just for experts wishing to know the exact configuration, the width of the text area is 6.5 inches (16.5 cm). All four margins are 1 inch (2.54 cm) on each page. In this MS Word template, the header and footer are set to, respectively, 0.69 inches (1.75 cm) and 0.75 inches (1.90 cm). The heading on the first page has no additional margin (effective heading 0.69 inches) while the running head with the authors’ names has an additional margin of 0.2 inches (0.51 cm) leading to an effective header position of 0.89 inches (2.26 cm) for all pages except the first one. The heading on the first page provides an additional margin of 0.5 inches (1.27 cm), leading to an effective title position of 1.5 inches (3.81 cm). Authors should *neither* change these header and footer settings nor the corresponding MS word styles when preparing a manuscript.

## **2.7 Justification**

Headings of sections, subsections, and subsubsections should be left-justified. One-line captions for figures or tables should be centered. A multiline caption for a figure or table should be fully justified. All other text should be fully justified across the page (that is, the text should line up on the right-hand and left-hand sides of the page).

## **2.8 Headings of Sections, Subsections, and Subsubsections**

Section, subsection, and subsubsection headings should appear flush left, set in the bold font style, and numbered as shown in this document. The headings for the Abstract, Acknowledgments, References and Author Biographies sections are not numbered. Section headings should be set in **FULL CAPITALS LIKE THIS PHRASE**, while subsection and subsubsection headings should be **Capitalized in Headline Style like This Phrase**. Lengthy headings should be broken across two or more lines. **Again, these formats should be accomplished using the styles Heading 1, Heading 2, Heading 3, etc.**

### **2.8.1 Paragraphs**

The first paragraph after a heading should not be indented; all other paragraphs should be indented by 0.25 inches (0.63 cm). Do not insert additional space between paragraphs.

Programming code should use “Program Start”, “Program”, and “Program End” Styles with the following guidelines.

```
class Exponential{
...// Properties of the Exponential
};
```

*LastName1, LastName2, LastName3, and LastName (LastAuthor)*

One-line programs should use the “Program Both” style.

```
Exponential interArrival;
```

## 2.8.2 Footnotes

**Do not use footnotes;** instead, incorporate such material into the text directly or parenthetically.

## 2.8.3 Page Numbers

Do not include page numbers. Page numbers are generated by the proceedings editors once all accepted papers are ordered for the final proceedings.

# 3 FORMATTING THE FIRST PAGE

## 3.1 Running Heads

The running head (provided in the template) in the upper left-hand corner of the first page (which should read *Proceedings of the 2019 Winter Simulation Conference ...*) is left-justified and set in the 11-point italic font style. You do not have to change the content of the first-page header; the first-page header was set by the proceedings editors in the preparation of this document.

Running heads on the second and subsequent pages should contain the last names of the authors, centered and set in the 11-point italic font style. For example, running heads for papers would appear like *Justme* for papers with one author, or *Justme and Him* for papers with two authors, or *Justme, Him, and Youtoo* for papers with three authors, etc. Separate the last names of the authors with a comma, except for the last author use “, and”. List all authors; do not use *et al.* except if they don’t fit on one line. In the latter case, only the first author is given followed by “et al.”. The author names are listed in the same order as they appear on the title page. This will be the same order when providing the author biographies at the end of the paper. Once on the second page of your document, view the header and make the appropriate changes.

## 3.2 Title and Authors

Center the title of the paper on the page and set it in bold **FULL CAPITALS**. Multiline titles should have about the same amount of text on each line. There should be two blank lines between the title and the authors’ names.

Each author’s name should be capitalized and centered on a new line, with the author’s first name first and no job title or honorific. Insert one blank line between the author’s name and address. The organization or institution that the author is affiliated to should be typed first. Next type the complete street address, without abbreviations, followed by the city, standard two-letter state or province abbreviation, postal code, and country. The address should be centered and capitalized, except for the country, which should be set in FULL CAPITALS. If you need to restore the style, select the “AuthorAddress” style. For papers with multiple authors, the authors should be listed in order of decreasing contribution, with authors from the same institution grouped. Different formats for multiple authors are shown as examples in Figures 3–8 at the end of this document. There should be two blank lines between the author fields and the text of the paper. The authors are provided in a table so adding and deleting columns is done via the table commands. Do not include email addresses on the first page; emails for authors are provided in the author biographies. Authors with multiple affiliations shall pick the primary affiliation for the title page and mention other affiliations in their resume.

# 4 FORMATTING SUBSEQUENT PAGES

Please refer to section 2.6 for the correct margins.

#### 4.1 Mathematical Expressions in Text and in Displays

Display only the most important equations, and number only the displayed equations that are explicitly referenced in the text. Assign the style "Equation" and add one empty line above and below the equations. If two equations are printed in direct sequence, do not add a blank line between them.

To conserve space, simple mathematical expressions such as  $\bar{Y} = n^{-1} \sum_{i=1}^n Y_i$  may be incorporated into the text. Mathematical expressions that are more complicated or that must be referenced later should be displayed, as in

$$s^2 = \frac{1}{n-1} \sum_{i=1}^n (Y_i - \bar{Y})^2$$

If an equation is referenced in the text, then enclose the equation number in parentheses and place it flush with the right-hand margin of the column. Add a tabulator before and after the equation and use the style "EquationNumbered" to get this effect. For example, the quadratic equation has the general form

$$ax^2 + bx + c = 0, \quad \text{where } a \neq 0. \tag{1}$$

In the text, each reference to an equation number should also be enclosed in parentheses. For example, the solution to (1) is given in (2) in Appendix A. Note that equation numbers are not automatically generated or referenced.

If the equation is at the end of a sentence, then you should end the equation with a period. If the sentence in question continues beyond the equation, then you should end the equation with the appropriate punctuation – that is, a comma, semicolon, or no punctuation mark. If the equation is not included within any sentence, but just given between two paragraphs, no punctuation is used as in equation (2).

$$ax^2 + bx + c = 0 \tag{2}$$

If you are using Microsoft Equation Editor 3.0, select the “EquationNumbered” style on the line where the equation will appear. Then press the TAB key to move the cursor to the center of the column. From Word’s Insert ribbon, select Object in the Text group. In the pull-down menu that appears, select Object, and in the Object panel, select type Microsoft Equation 3.0, and type the equation. While in the Equation Editor, you should verify that the font size is at most 11 points. On the Equation Editor’s menu bar, select Size > Define, and set the “Full” font size to 11. Close the Equation Editor. To include the equation number, press the TAB key. This will move the cursor to the right-hand margin; then type the equation number enclosed in parentheses. If you don't need to number the equation, use the "Equation" style and leave out the tabs.

If you are using MathType, click the “Insert Display Equation” button on MathType’s Equation Editor menu bar. Before you type the equation, verify that the font size is at most 11 points by choosing Size > Define. After typing the equation, close the MathType Equation Editor, press the TAB key to move the cursor to the right margin, and type the equation number, if any, enclosed in parentheses. For unnumbered equations, MathType users should click the “Insert Display Equation” button.

Entering equations using the Equation option available in the Symbols group on the Insert tab in Microsoft Word 2007 or 2010 is not recommended. For Microsoft Word 2007 or 2010, the equation capability makes entering equations quite convenient but numbering them requires using tables. Instructions for inserting equation numbers for Microsoft Word 2007 and 2010 are available online at [WordTips](#) (Sharon Parq Associates 2018).

## 4.2 Displayed Lists

A displayed list is a list that is set off from the text, as opposed to a run-in list that is incorporated into the text. The bulleted list given below provides more information about the format of a displayed list.

- Use the "Lists Bulleted" style that leads to standard bullets instead of checks, arrows, etc.,
  1. For numbered lists, use the "List Enum" style with Arabic numbers,
  2. You may need to restart the numbering on numbered lists. To do so, right click on the first entry in the list.

Indent the paragraph after the list. Include an empty line before and after the list.

## 4.3 Figures and Tables

Figures and tables should be centered within the text and should not extend beyond the right and left margins of the paper. Figures and tables can make use of color since the WSC produces electronic proceedings. However, try to select colors that can be differentiated when printing in black and white in consideration of people using such printers. Figures and tables are numbered sequentially, but separately, using Arabic numerals. All tables and figures should be explicitly referenced in the text and they should not be placed before they are referenced. The reference is always written in full (Figure 1), and never abbreviated as in "(Fig. 1)". For figures which can fit next to each other, the author can choose to align them next to each other with the figure text centered below each figure and on the same line for both figures. For tables which can fit next to each other, the author can also choose to align them next to each other with the table text centered above each table and on the same line for both tables.

To insert a table, use the usual Table option on the Insert ribbon. To center the table, first select the table, then right-click and select Table Properties, followed by the Table tab and click the Center button for Alignment and the None button for Text wrapping. Each table should appear in the document after the paragraph in which the table is first referenced. However, if the table is getting split across pages, it is okay to include it after a few paragraphs from its first reference. The table's single-line captions are centered, while multi-line captions are fully justified. This template **does not** use the Word capabilities to insert table captions and, thus, does not use the automatic referencing capabilities of Word. Instead, add the appropriate caption *above* the table and use the "Table Label" style for tables with a single-line caption. Use the "Table Label Multiline" style for multiline table captions. The styles include inserting a 12 pt. space above and a 6 pt. space after the caption. The caption should begin with the word Table, followed by the table number and a colon. Captions can be written using normal sentences with full punctuation. All captions should end with a period. It is fine to have multiple-sentence captions that help to explain the table. Include one line space below the table. See Tables 2 and 3 for examples.

Table 2: Table captions appear above the table, and if they are longer than one line they are fully justified. Captions are written using normal sentences with full punctuation. It is fine to have multiple-sentence captions that help to explain the table.

Creature	IQ	Diet
dog	70	Anything
human	60	ice cream
dolphin	120	fish fillet

Table 3: Counting in Maori.

English	Maori
one	Tahi
two	Rua

Each figure should appear in the document after the paragraph in which the figure is first referenced. However, if the figure is getting split across pages or is leading to an empty space at the bottom of the page, it is okay to include it after a few paragraphs from its first reference. Figure captions appear below the figure. Single-line captions are centered, while multiline captions are fully justified. This template **does not** use the Word capabilities to insert figure captions and, thus, does not use the automatic referencing capabilities of Word. Instead, add the appropriate caption below the figure and use the "Figure Label" style to label the figure for a single-line caption. Use the "Figure Label Multiline" style for multiline captions. The styles include inserting a 6 pt. space above and a 12 pt. space after the caption. Include one line space above the figure. The caption should begin with the word Figure, followed by the figure number and a colon. Captions end with a period. See Figures 1 and 2 for examples.

Paste complete figures as pictures into the document (avoid drawing the picture within Word directly). To format the picture, select it and then use the "Figure Content" style. The picture will be formatted centered and with one line space above the figure.

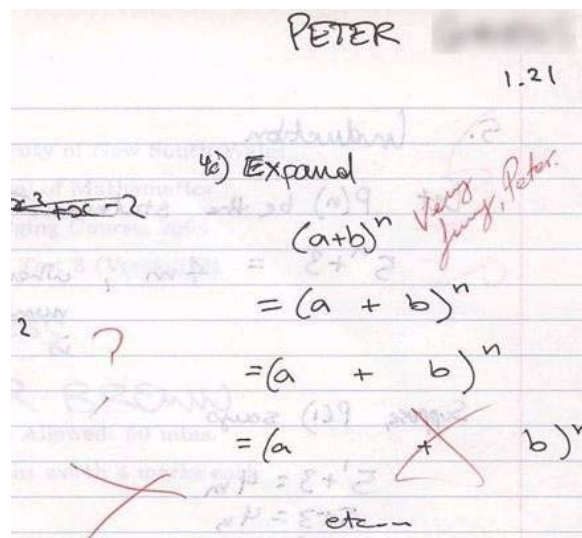


Figure 1: An unusual answer to a question.

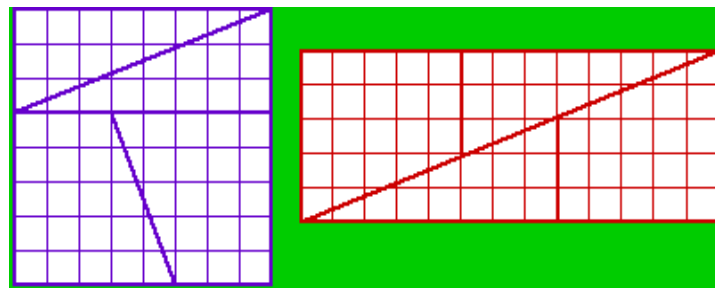


Figure 2: The area of the square is 64 squares, while that of the rectangle is 56 squares, yet they are made of the same pieces! How is this possible?

References to tables and figures identified by number are capitalized. Avoid using "in the previous table" or "in the figure below", as positions might change in the final formatting.

Please ensure that the text within figures uses standard fonts and is readable: Arial (recommended), Symbol, etc. The minimum font size should be around 9pt (Arial). Remember that you might need larger fonts in your original figure if you reduce the size of the figure in your WSC paper to less than 100% (e.g.,



when you insert your figure with a 50% of its original size, your original fonts have to be  $\geq 18$ pt.). This applies to all text elements in the figure, including captions of axes, etc.

#### **4.4 Definitions and Theorems**

Definitions, theorems, propositions, etc. should be formatted like a normal paragraph with boldface heading as shown in the examples below. Number these items separately and sequentially. You may choose to separately number theorems, propositions, corollaries, etc., as opposed to the example below where corollaries and theorems are numbered together. Use the "definition" style, also for theorems and corollaries. Do not use a period after the definition, theorem, corollary or proposition *number*, but do end the sentence with a period.

**Definition 1** In colloquial New Zealand English, the term *dopey mongrel* is used to refer to someone who has exhibited less than stellar intelligence.

**Theorem 1** If a proceedings editor from New Zealand accidentally deletes his draft of the author kit shortly after completing it, he would be considered to be a *dopey mongrel*.

**Corollary 2** One of the proceedings editors is a *dopey mongrel*.

Indent the paragraph after the definition or theorem. Include an empty line before and after the item.

#### **4.5 Hyperlinks**

A *hyperlink* specifies a Web address (URL) or an e-mail address. The use of hyperlinks allows authors for providing readers access to external electronic information, such as a dynamic simulation or animation. **While the use of hyperlinked text is encouraged in the main body of the paper, it is recommended that corresponding Web addresses and other identifying information should be provided in the list of references.** For example, instead of spelling out the Web address of the conference website, one would refer to the [conference website](#) and the corresponding entry in the reference section will spell out the associated Web address and other relevant information such as author(s) and/or organization that published the content. This would allow readers for searching for the content using the author(s), organization, etc. if the actual Web address is changed. This also allows for a cleaner appearance of the main body of the paper.

If the author(s) feel that sufficient information is provided in the main body of the paper to locate the content even if the Web address is changed, the address can be included in the main body of the paper itself.

Each hyperlink should be set in the same font as the text. Hyperlinks are *not* underlined. A live hyperlink (or hot link) – that is, a hyperlink that will activate your Web browser and take it to an external website or that will activate your e-mail software for sending a message to a specific e-mail address – should be colored blue. You can see examples of such hyperlinks in this paper. The use of live hyperlinks is at the discretion of the author(s), except in the author biographies.

Using live hyperlinks requires the format defined in the “Hyperlink” style. To insert a live hyperlink into a WSC paper, please follow the following steps:

1. In the current paragraph style, enter the text where the live hyperlink is to appear.
2. With the displayed text selected, choose Insert > Hyperlink from the ribbon or right-click and select “Hyperlink.”
3. In the dialog box that appears, select the button labeled “Existing File or Web Page” or “E-mail address.”

*LastName1, LastName2, LastName3, and LastName (LastAuthor)*

4. In the second box labeled “Address” type only the correct e-mail or Web address, with the prefix `http://` for a Web address.
5. If not done automatically, select the displayed text of the live hyperlink and apply the “Hyperlink” style.
6. For hyperlinks with Web addresses, enter an appropriate citation following the text and provide the Web address and other relevant information in the corresponding entry in the list of references.

If *any* editing is made to the displayed text of a live hyperlink, then the “Address” box referred to above should be rechecked to ensure no extraneous characters have been introduced into that box. To check the “Address” box for accuracy, place the cursor anywhere in the displayed text of the hyperlink and right-click. Select “Edit Hyperlink.” If extraneous characters have been introduced, delete them from the “Address” box.

If it is necessary to break the displayed text of the e-mail or Web address across two or more lines, then you can “edit the hyperlink” in MS Word. There are two fields, one for the original hyperlink and the other one for the display, where you can add spaces or soft breaks without influencing the actual link.

Non-live hyperlinks – that is, the hyperlinks that are included for the reader’s information but do not actually invoke the reader’s Web browser or e-mail software – should be colored black.

#### **4.6 Citing a Reference**

To cite a reference in the text, use the author-date method. Thus, Chien (1989) could also be cited parenthetically (Chien 1989). Do not use a comma within this parenthesis. For a work by three or more authors, use an abbreviated form. For example, a work by Banks, Carson, and Nelson would be cited in one of the following ways: Banks et al. (2000) or (Banks et al. 2000).

Parenthetical citations are enclosed in parentheses ( ), not square brackets [ ]. Semicolons separate the items in a series of such citations.

The following is a list of **correct** forms of citations:

- Brown and Edwards (1993)
- (Brown and Edwards 1993)
- (Smith 1987; Brown and Edwards 1992; Brown et al. 1995)

The following is a list of **incorrect** forms of citations:

- Brown and Edwards [1993]
- (Brown and Edwards, 1993)
- (Smith, 1987; Brown and Edwards, 1993)
- (Smith 1987, Arnold, Brown and Edwards 1992, Brown et al. 1995)

#### **4.7 General Style and Sequence of References**

Place the list of references after the appendices. The section heading is **REFERENCES**, and is not numbered (use style “heading”). List all references that are cited in the text, but only those. The only exception are papers in the “tutorial” tracks: Here it is permitted to have an additional section heading **ADDITIONAL READING** after references, followed by further literature that is recommended for continued studies but not directly used within the text of the paper.

Use hanging indentation to distinguish individual entries (use the style “Reference”). Do not insert additional space between references. References have a reduced font of 9 pt and a line spacing of 10.5 pt. Do not number the references and arrange them in the following order:

*LastName1, LastName2, LastName3, and LastName (LastAuthor)*

- By the last name of the first author
- For papers with the same first author, arrange first all papers by this author only, then all papers by this author and one co-author, and finally all papers with this author and two or more co-authors
- Within this sorting sequence, arrange papers by year

To identify multiple references by the same authors and year, append a lower case letter to the year of publication, for example, 1984a and 1984b. The same applies to references that have more than two authors and the same first author and year.

Give complete references without abbreviations. Even for more than three authors, list all authors.

The following sections specify the requested content for several types of references. Examples can be found in the references and additional reading sections, which include:

- A technical report (Chien 1989)
- A proceedings article with book publication (Cheng 1994)
- A conference contribution without book publication (Rabe et al. 2017)
- A journal article with two authors (Powell and Mustafee 2017)
- A journal article with more than two authors (Gupta et al. 1973)
- A book by two (2) authors (Hammersley and Handscomb 1964)
- A chapter in a book (Schruben 1979)
- An unpublished thesis or dissertation (Steiger 1999)
- A book with no identified authors (The University of Chicago Press 2010)
- A document available on the Web (WSC 2019)

## 4.8 Formatting References according to their Type of Publication

### 4.8.1 Journal Articles

The bibliographic style for a journal article is: <Surname of first author>, <Author's initial(s)>, <Initials and surnames of other authors>. <year>. <Capitalized article title in quotes>. <Journal Name in Headline *Italics*> <Volume number>(issue number):<page numbers>.

Gupta, S. S., K. Nagel, and S. Panchapakesan. 1973. "On the Order Statistics from Equally Correlated Normal Random Variables". *Biometrika* 60(2):403-413.

Powell, J. H. and N. Mustafee. 2017. "Widening Requirements Capture with Soft Methods: An Investigation of Hybrid M&S Studies in Healthcare". *Journal of the Operational Research Society* 68(10):1211-1222.

### 4.8.2 Books

The bibliographic style for books is: <Surname of first author>, <Author's initial(s)>, <Initials and surnames of other authors>. <year>. <Book Name in Headline *Italics*>. [<edition> ed. ]<city of publication>: <publisher>.

Banks, J., J. S. Carson, B. L. Nelson, and D. M. Nicol. 2000. *Discrete-Event System Simulation*. 3rd ed. Upper Saddle River, New Jersey: Prentice-Hall, Inc.

Hammersley, J. M. and D. C. Handscomb. 1964. *Monte Carlo Methods*. London: Methuen.

Law, A. M. and W. D. Kelton. 2000. *Simulation Modeling & Analysis*. 3rd ed. New York: McGraw-Hill, Inc.

### 4.8.3 Book Contributions

The bibliographic style for book contributions is: <Surname of first author>, <Author's initial(s)>, <Initials and surnames of other authors>. <year>. <Capitalized article title in quotes>. In <Book Name in Headline

*LastName1, LastName2, LastName3, and LastName (LastAuthor)*

*Italics*>, edited by <Initials and surnames of editors>, <page numbers>. <city of publication>: <publisher>. Publishers are not abbreviated (“IEEE”, “ASIM”), but written in full (“Institute of Electrical and Electronics Engineers, Inc.”, “Arbeitsgemeinschaft Simulation”, etc.).

Cheng, R. C. H. 1994. “Selecting Input Models”. In *Proceedings of the 1994 Winter Simulation Conference*, edited by J. D. Tew, M. Manivannan, D. A. Sadowski, and A. F. Seila, 184–191. Piscataway, New Jersey: Institute of Electrical and Electronics Engineers, Inc. .

Schruben, L. W. 1979. “Designing Correlation Induction Strategies for Simulation Experiments”. In *Current Issues in Computer Simulation*, edited by N. R. Adam and A. Dogramaci, 235–256. New York: Academic Press.

#### 4.8.4 Conferences

For conferences that have been published as an (electronic) book publication (with editors, publisher, ISBN), use the same style as for book contributions (take care to specify the city of publication, not the conference location!). This especially applies to past WSC proceedings, such as (Cheng 1994). See the example under “book contributions” for this purpose.

For conferences that have not been published as a book, the bibliographical style is: <Surname of first author>, <Author’s initial(s)>, <Initials and surnames of other authors>. <year>. <Capitalized article title in quotes>. <Conference Name in Headline Italics>, <full date(s) of conference>, <location of conference>, <page numbers if available>.

Rabe, M., F. Dross, A. Wuttke. 2017. "Combining a Discrete-event Simulation Model of a Logistics Network with Deep Reinforcement Learning". In *Proceedings of the MIC and MAEB 2017 Conferences*, July 4<sup>th</sup>-7<sup>th</sup>, Barcelona, Spain, 765-774.

#### 4.8.5 Handbooks, Reports, and other Publications

If you need to cite handbooks or other publications that have editors but no authors, use the following bibliographic style: <Surname of first editor>, <Editor’s initial(s)>, <Initials and surnames of other editors>, Editors. <year>. <Book Name in Headline Italics>. <city of publication>: <publisher>.

Chien, C. 1989. “Small Sample Theory for Steady State Confidence Intervals”. Technical Report No. 37, Department of Operations Research, Stanford University, Stanford, California.

#### 4.8.6 Online Publications

For publications that are only WWW pages, if there is no way to avoid them, use the best fitting style from the categories above and add the URL and the date when you accessed the page without the year:

Sharon Parq Associates. 2018. WordTips: Numbering Equations. [http://word.tips.net/Pages/T000273\\_Numbering\\_Equations.html](http://word.tips.net/Pages/T000273_Numbering_Equations.html), accessed 15<sup>th</sup> April.

If you just refer to a document from the WWW that has a clear publication date, the citation year is this date and the year of access must be given:

Steiger, N. M. 1999. *Improved Batching for Confidence Interval Construction in Steady-State Simulation*. Ph.D. thesis, Department of Industrial Engineering, North Carolina State University, Raleigh, North Carolina. <http://www.lib.ncsu.edu/resolver/1840.16/4713>, accessed 12<sup>th</sup> February 2019.

## ACKNOWLEDGMENTS

Place the acknowledgments section, if needed, after the main text, but before any appendices and the references. The section heading is not numbered. These instructions are adapted from instructions that have been iteratively updated and improved by proceedings editors and several other individuals, who are too

*LastName1, LastName2, LastName3, and LastName (LastAuthor)*

numerous to name separately, since the first set of instructions were written by Barry Nelson for the 1991 WSC.

## A APPENDICES

Place any appendices after the acknowledgments and label them **A**, **B**, **C**, and so forth.

The solution to (1) has the form

$$x = \frac{-b \pm \sqrt{b^2 - 4ac}}{2a} \quad a \neq 0 \quad (2)$$

## B GETTING HELP

If you need help in preparing your paper, contact the proceedings editors. You can reach us individually using the contact information below:

Navonil Mustafee (*lead editor*)  
University of Exeter  
E-Mail: [n.mustafee@exeter.ac.uk](mailto:n.mustafee@exeter.ac.uk)

Ki-Hwan G. Bae  
University of Louisville  
E-Mail: [kihwan.bae@louisville.edu](mailto:kihwan.bae@louisville.edu)

Sanja Lazarova-Molnar  
University of Southern Denmark  
E-Mail: [slmo@mmmi.sdu.dk](mailto:slmo@mmmi.sdu.dk)

Markus Rabe  
TU Dortmund University  
E-Mail: [markus.rabe@tu-dortmund.de](mailto:markus.rabe@tu-dortmund.de)

Claudia Szabo  
The University of Adelaide  
E-Mail: [claudia.szabo@adelaide.edu.au](mailto:claudia.szabo@adelaide.edu.au)

## C AUTHORS' CHECKLIST

We strive for a consistent appearance in all papers published in the proceedings. If you have used the template and styles within this author's kit, then almost all of the requirements in this checklist will be automatically satisfied, and there is very little to check. Please **print a hardcopy of your paper**, and go over your printed paper to make sure it adheres to the following requirements. Thank you!

1. The paper can be *at most* 12 pages long (15 for tutorials and panel sessions). Longer papers cannot be published; the minimum number of pages is 5 pages.
2. No keywords, footnotes or page numbers.
3. The paper has been spellchecked using U.S. English.
4. The paper title is in bold and in ALL CAPS. Please use the template to use correct indents and spaces.
5. The abstract must have 150 or fewer words.
6. Double-check that the author section after the title is formatted correctly: the number of organizations defines the number of blocks, and the number of blocks defines the layout. Country names are in ALL CAPS.
7. Use the correct running heads! Use the proceedings editors and chairs on page one, and use the last names separated by commas for the other pages. Do not forget that the last "Last Name" is preceded by "and" (also with a comma if more than two authors).
8. Section titles are in bold and ALL CAPS, subsections capitalize the first letter of important words. Please use the templates to use correct indents and spaces and make sure to left-justify. Section titles are numbered, except for the abstract, acknowledgements, references and author biographies.

*LastName1, LastName2, LastName3, and LastName (LastAuthor)*

9. The first line of each paragraph is indented, except for the first paragraph of a section or subsection.
10. There should be extra lines before and after enumerations, lists, definitions, etc.
11. Citations are by author and year; citations are enclosed in parentheses, not brackets.
12. References are in the hangref style with a 9pt font, listed alphabetically by the last names(s) of the author(s),
13. Double-check that figures and tables are referenced in the text and have the correct caption format! Table captions appear above the table. Figure captions appear below the figure. All text in figures and tables is readable (minimum final print font using Arial could be 8pt, for Times 9pt).
14. Verify that equations are centered and that all equation numbers are in parentheses and right-justified.
15. Ensure that hyperlinks will work as of the date of December 2019. Live hyperlinks are blue, non-live hyperlinks are black.
16. Don't forget the "author biographies" section! Author biographies must be one paragraph per author and must include an email address.

The following items should work automatically if you are using the WSC 2019 template, but you are encouraged to double-check, especially if you copy and paste any text from other documents:

1. Paper is letter format (8.5" x 11", or 216 mm x 279 mm), not DIN A4 format. Please use the required margins as defined in section 2.6.
2. All text is in 11-Point Times New Roman with a line spacing of 12.5pt, except references and author biographies, which are 2pts smaller in size and spacing

## REFERENCES

- Banks, J., J. S. Carson, B. L. Nelson, and D. M. Nicol. 2000. *Discrete-Event System Simulation*. 3rd ed. Upper Saddle River, New Jersey: Prentice-Hall, Inc.
- Cheng, R. C. H. 1994. "Selecting Input Models". In *Proceedings of the 1994 Winter Simulation Conference*, edited by J. D. Tew, M. Manivannan, D. A. Sadowski, and A. F. Seila, 184–191. Piscataway, New Jersey: Institute of Electrical and Electronics Engineers, Inc. .
- Chien, C. 1989. "Small Sample Theory for Steady State Confidence Intervals". Technical Report No. 37, Department of Operations Research, Stanford University, Stanford, California.
- Gupta, S. S., K. Nagel, and S. Panchapakesan. 1973. "On the Order Statistics from Equally Correlated Normal Random Variables". *Biometrika* 60(2):403–413.
- Hammersley, J. M. and D. C. Handscomb. 1964. *Monte Carlo Methods*. London: Methuen.
- Law, A. M. and W. D. Kelton. 2000. *Simulation Modeling & Analysis*. 3rd ed. New York: McGraw-Hill, Inc.
- Powell, J. H. and N. Mustafee. 2017. "Widening Requirements Capture with Soft Methods: An Investigation of Hybrid M&S Studies in Healthcare". *Journal of the Operational Research Society* 68(10):1211-1222.
- Rabe, M., F. Dross, and A. Wuttke. 2017. "Combining a Discrete-event Simulation Model of a Logistics Network with Deep Reinforcement Learning". In *Proceedings of the MIC and MAEB 2017 Conferences*, July 4<sup>th</sup>-7<sup>th</sup>, Barcelona, Spain, 765-774.
- Schruben, L. W. 1979. "Designing Correlation Induction Strategies for Simulation Experiments". In *Current Issues in Computer Simulation*, edited by N. R. Adam and A. Dogramaci, 235–256. New York: Academic Press.
- Sharon Parq Associates. 2018. WordTips: Numbering Equations. [http://word.tips.net/Pages/T000273\\_Numbering\\_Equations.html](http://word.tips.net/Pages/T000273_Numbering_Equations.html), accessed 15<sup>th</sup> April.
- Steiger, N. M. 1999. *Improved Batching for Confidence Interval Construction in Steady-State Simulation*. Ph.D. thesis, Department of Industrial Engineering, North Carolina State University, Raleigh, North Carolina. <http://www.lib.ncsu.edu/resolver/1840.16/4713>, accessed 12<sup>th</sup> February 2019.

## ADDITIONAL READING

This section is only permitted (but not mandatory) in the "tutorial" tracks. It provides further literature that is recommended for continued studies but not directly used within the text of the paper.

*LastName1, LastName2, LastName3, and LastName (LastAuthor)*

The University of Chicago Press. 2010. *The Chicago Manual of Style*. 16th ed. Chicago: The University of Chicago Press.  
<http://www.chicagomanualofstyle.org>, accessed 12<sup>th</sup> February 2019.  
WSC, 2019. Winter Simulation Conference, accessed 22<sup>nd</sup> January 2019.

## **AUTHOR BIOGRAPHIES**

Author biographies are mandatory for all authors and given in the same sequence as in the running head. Use a smaller font (9 pt) with a 10.5pt line spacing (MS Word style AuthorBio). Giving an email address is mandatory and the author's name is set in bold capitals (see the examples below). Separate the authors by an empty line with the same style. Give only one paragraph per author, but sufficient information to understand the author's position and scientific background.

**NAVONIL MUSTAFEE** is Associate Professor of Operations Management and Analytics and the Deputy Director of The Centre for Simulation, Analytics and Modelling (CSAM) at the University of Exeter Business School, UK. He holds a PhD in distributed computing and simulation from Brunel University, UK. His research interests include hybrid modelling and simulation, healthcare simulation and bibliometric analysis. Nav is an Associate Editor for *Simulation: The Transactions of the SCS* and the *Journal of Simulation (JOS)*. He has guest-edited special issues in *TOMACS*, *Simulation* and *JOS*, and has held leadership positions at international simulation conferences, including, General Chair (SpringSim'16), Program Chair/Co-Chair (SpringSim'14, 2015 SIGSIM PADS), and Proceedings Co-Editor (2015 SIGSIM PADS, WinterSim'2017 and 2018). He developed and led the 'Hybrid Simulation' track at the Winter Simulation Conference from 2014 to 2018. His email address is [n.mustafee@exeter.ac.uk](mailto:n.mustafee@exeter.ac.uk). His website is <https://sites.google.com/site/navonilmustafee/>.

**KI-HWAN G. BAE** is an Assistant Professor in the Department of Industrial Engineering at the University of Louisville. He holds an M.S. in Industrial Engineering from Purdue University and a PhD in Industrial and Systems Engineering from Virginia Polytechnic Institute and State University. His research experiences are in modeling, simulation, and optimization, and he has conducted studies in the application areas of healthcare, logistics, and transportation. The main focus of his research is on developing methodologies to design and analyze complex systems and their interactions. Besides simulation modeling and analysis, his research interest also includes capacity management and network optimization. His email address is [kihwan.bae@louisville.edu](mailto:kihwan.bae@louisville.edu).

**SANJA LAZAROVA-MOLNAR** is Associate Professor with the Faculty of Engineering at the University of Southern Denmark. Her current research interests include modeling and simulation of stochastic systems, reliability modeling and analysis, and data analytics for decision support. Since 2019, she is serving on the Board of Directors of The Society for Modeling & Simulation International (SCS). Sanja Lazarova-Molnar obtained her PhD in Computer Science from the University in Magdeburg, Germany, in 2005, specializing in the area of Modeling and Simulation, where she was also a member of the Simulation Group at the Institute of Simulation and Graphics. She has successfully collaborated with industry and academia, authoring more than 80 peer-reviewed research publications. Her email address is [slmo@mmmi.sdu.dk](mailto:slmo@mmmi.sdu.dk).

**MARKUS RABE** is Full Professor for IT in Production and Logistics at the Technical University Dortmund. Until 2010 he had been with Fraunhofer IPK in Berlin as head of the corporate logistics and processes department, head of the central IT department, and a member of the institute direction circle. His research focus is on information systems for supply chains, production planning, and simulation. Markus Rabe is vice chair of the "Simulation in Production and Logistics" group of the simulation society ASIM, member of the editorial board of the *Journal of Simulation*, member of several conference program committees, has chaired the ASIM SPL conference in 1998, 2000, 2004, 2008, and 2015, Local Chair of the WSC'2012 in Berlin and Proceedings Chair of the WSC'18. More than 190 publications and editions report from his work. His e-mail address is [markus.rabe@tu-dortmund.de](mailto:markus.rabe@tu-dortmund.de).

**CLAUDIA SZABO** is an Associate Professor in the School of Computer Science at the University of Adelaide. Her research interests lie in the area of complex systems and on using simulation to identify and validate their emergent properties. Claudia is an Associate Editor for *ACM TOMACS*, has been the General co-chair of *SIMUTOOLS 2015*, and a Track Coordinator for WSC since 2014. Her email address is [claudia.szabo@adelaide.edu.au](mailto:claudia.szabo@adelaide.edu.au).

*LastName1, LastName2, LastName3, and LastName (LastAuthor)*

**AUTHOR BLOCK TEMPLATES (TITLE PAGE)**

First Name Last Name 1  
[First Name Last Name 2]  
[First Name Last Name 3]

Institution  
Street Address line 1  
Street Address line 2  
City, ST Zip, COUNTRY

Figure 3: Example title page heading with author(s) from one single institution. Each author name has its own line.

First Name Last Name 1  
[First Name Last Name 3]

First Name Last Name 2  
[First Name Last Name 4]

Institution 1  
Street Address line 1  
Street Address line 2  
City, ST Zip, COUNTRY

Institution 2  
Street Address line 1  
Street Address line 2  
City, ST Zip, COUNTRY

Figure 4: Example title page heading with authors from two different institutions. Each author name is entered in a separate line. If you have more authors from one institution, then please add blank table cells to align the institutions on the same line.

First Name Last Name 1

First Name Last Name 2

Institution 1  
Street Address line 1  
Street Address line 2  
City, ST Zip, COUNTRY

Institution 2  
Street Address line 1  
Street Address line 2  
City, ST Zip, COUNTRY

First Name Last Name 3

Institution 3  
Street Address line 1  
Street Address line 2  
City, ST Zip, COUNTRY

Figure 5: Example title page heading with authors from three different institutions. Note that there are two empty rows between the institutions. For additional authors from these institutions compare Figure 4.



*LastName1, LastName2, LastName3, and LastName (LastAuthor)*

First Name Last Name 1	First Name Last Name 2
Institution 1	Institution 2
Street Address line 1	Street Address line 1
Street Address line 2	Street Address line 2
City, ST Zip, COUNTRY	City, ST Zip, COUNTRY
First Name Last Name 3	First Name Last Name 4
Institution 3	Institution 4
Street Address line 1	Street Address line 1
Street Address line 2	Street Address line 2
City, ST Zip, COUNTRY	City, ST Zip, COUNTRY

Figure 6: Example title page heading with authors from four different institutions. Note that there are two empty rows between the institutions. For additional authors from these institutions compare Figure 4.

First Name Last Name 1	First Name Last Name 2
Institution 1	Institution 2
Street Address line 1	Street Address line 1
Street Address line 2	Street Address line 2
City, ST Zip, COUNTRY	City, ST Zip, COUNTRY
First Name Last Name 3	First Name Last Name 4
Institution 3	Institution 4
Street Address line 1	Street Address line 1
Street Address line 2	Street Address line 2
City, ST Zip, COUNTRY	City, ST Zip, COUNTRY
First Name Last Name 5	
Institution 5	
Street Address line 1	
Street Address line 2	
City, ST Zip, COUNTRY	

Figure 7: Example title page heading with authors from five different institutions. Note that there are two empty rows between the institutions. For additional authors from these institutions compare Figure 4.

*LastName1, LastName2, LastName3, and LastName (LastAuthor)*

First Name Last Name 1	First Name Last Name 2
Institution 1	Institution 2
Street Address line 1	Street Address line 1
Street Address line 2	Street Address line 2
City, ST Zip, COUNTRY	City, ST Zip, COUNTRY
First Name Last Name 3	First Name Last Name 4
Institution 3	Institution 4
Street Address line 1	Street Address line 1
Street Address line 2	Street Address line 2
City, ST Zip, COUNTRY	City, ST Zip, COUNTRY
First Name Last Name 5	First Name Last Name 6
Institution 5	Institution 6
Street Address line 1	Street Address line 1
Street Address line 2	Street Address line 2
City, ST Zip, COUNTRY	City, ST Zip, COUNTRY

Figure 8: Example title page heading with authors from six different institutions. Note that there are two empty rows between the institutions. For additional authors from these institutions compare Figure 4.